



FRONT-END LOADER

FRONTLIFT



Joint production of agricultural equipment
of the world level



FRONT-END LOADER

FRONTLIFT



Equipment is designed for short-distance transportation and loading of cargos into transport facilities.

Description	Value
Type of loader	mounted
It is geared with tractors of 1.4 kn class	MT 3-80/80L MT 3-82/82L YTO (China) LMZ (Russia)
Drive	Tractor's hydraulic system
Operating speed up to, km/h	6
Rated load capacity, t	0.8
Service life of the loader no less, years	7

Basic technical characteristics of Frontlift:

height of loading

- with bucket, 3.1 m
- with multipurpose forks, 3.3 m
- with pallet forks, 3.7 m
- with tipper KNP-2100, 3.4 m

maximum boom overhang – 2.08 m.

————— ADVANTAGES OF THE LOADER —————

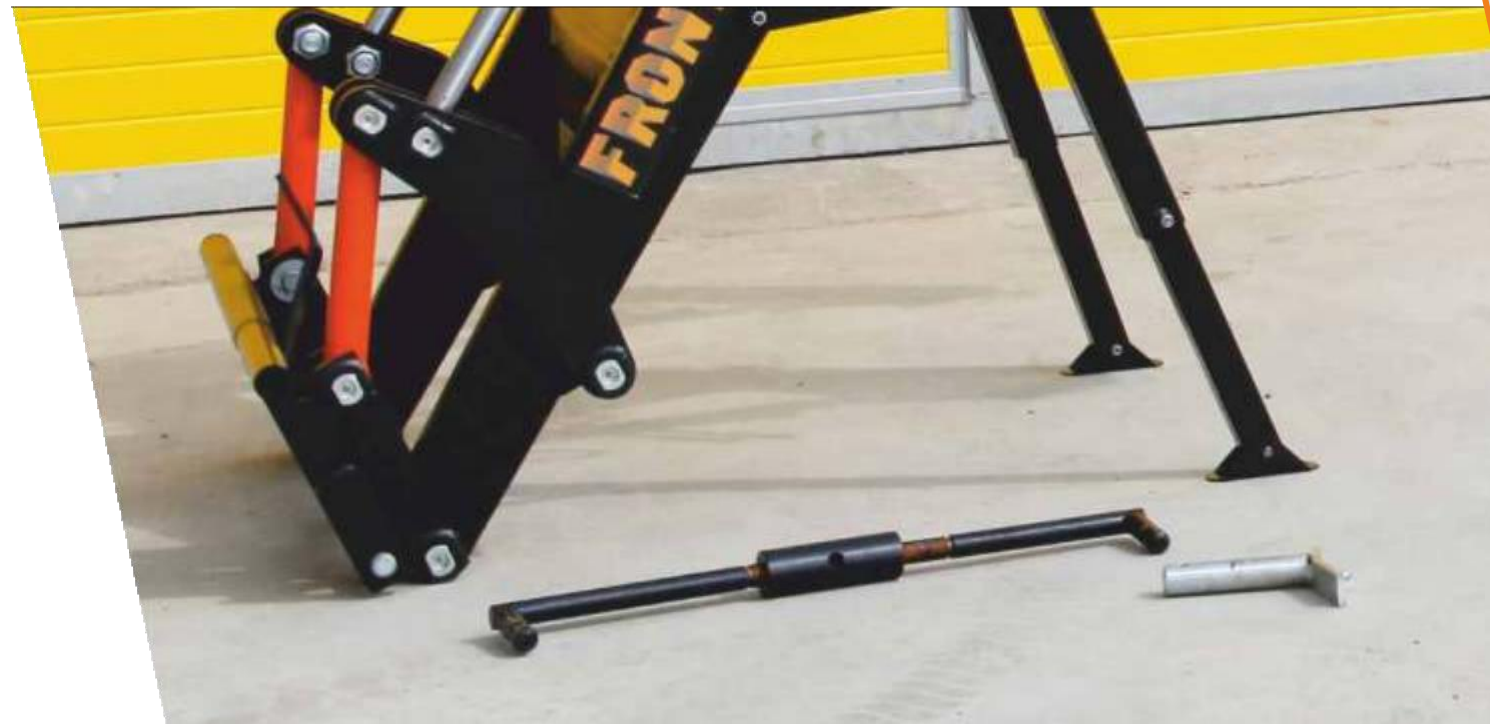
FRONTLIFT





It is produced on Italian production line consisting of the machines for laser cutting, precision bending and robot welding and ensures high precision of cutting, 100% assemblability and welds reliability.

Telescopic jacks allow to quickly mount and remove the loader, and tractor is not dependent on the loader.





Quick dismantable gripping tool guarantees minimum efforts and time: working heads are installed and replaced by a single movement of handle.

Loader is fixed over the entire length of the tractor`s frame with fixation in three points and provides a uniform load distribution on the tractor`s frame.





Loader is made of steel designed for operation at a temperature down to -40°C .

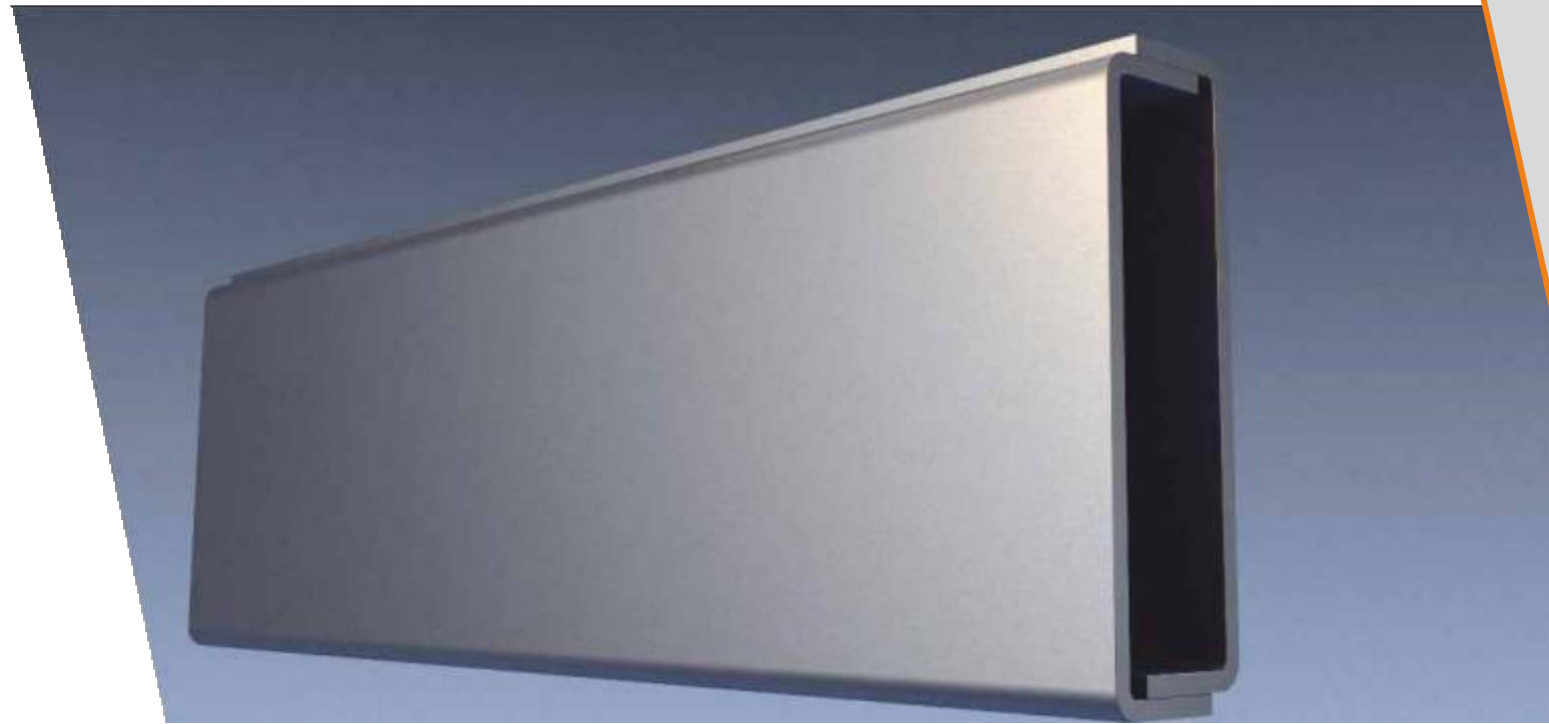
Hinge joints are equipped with grease fittings and bushings with PTFE coating. No grease points per every shift.





Transport packaging ensures costs reduction for transportation due to compact placement

Boom frame structure is of box section which increases limiting resistance to deflection and ensures an adequate margin of safety for the entire product.





Cranes with hydraulic lock ensure security in tractor driving on public roads in accordance with the Russian regulations.

Self Leveling System allows you to keep predetermined position and working tool or cargo tilt when lifting and lowering. It allows to save the load during boom lifting at the same level, which is especially convenient during pallets or hay rolls loading and unloading; eliminates spilling of bulk cargos from the bucket, etc.





Protective radiator guard reliably protects the front part of the tractor from damage.

Quick-release connections for high-pressure hoses.





Imported rods with chrome coating are used in hydraulic cylinders (with 25 microns thickness) preventing from rust, staining, dyeing on the surface, and wear of sleeves with honed surface; sealing joints and scrapers are provided with improved profile, which ensure a long operating period for the cylinders.

High pressure hoses made of oil-resistant rubber, resistant to wear and external impacts, with double high-strength steel braiding.





During the process of Frontlift loader production, only German fastener Würth was used, which guarantees components consistent high quality.

All working heads are equipped with high-strength peaks made in Germany, which improve reliability and ensure uninterrupted operation of the loader.



WORKING HEADS OF THE LOADER

FRONTLIFT



FRONTLIFT



TIMBER DOG

Designed for wood, logs and timber unloading. Timber dog has a robust construction and is equipped with hydraulic cylinders from Italian components.

Characteristics

Weight	150 kg
Height	850 mm
Width	1300 mm
Length	830 mm

Features

Reliability and rigidity of structure combined with low weight.



ALLIGATOR

Alligator silage cutter is designed for silage batch extraction. Top and side cutting blades ensure clean cut, preventing air ingress into the silage. Closed type design prevents spilling and loss of silage mass.

Characteristics

Length	1.1 m
Width	1.2 m
Volume	0.6 m ³

Features

Assembled with powerful hydraulic cylinders, extremely sharp and durable blades made of special tool steel on three sides of the working area and high-strength peaks made in Germany, which improve the reliability and ensure uninterrupted operation.



ROLL TIPPER

Roll tipper is designed for rolls gripping, handling and storing; ensures their lifting and lowering to the height of 3.4 meters (along the bottom edge of the roll) tipping by 90° without damaging package film.

Features

Roll tipper provides uniform rolls grapping; it has a removable adjustment rod to change the width of grapping.

Characteristics

Mass of roll moved, up to	850 kg
Roll dimensions:	
Diameter	700—1800 mm
Height	1200—1500 mm
Maximum pressure load	2000 kgs
Roll tipper overall dimensions, no more:	
Length	1800 mm
Width with gripping tools reduced	1900 mm
Width with gripping tools pulled	2500 mm
Height	950 mm
Maximum gripping tools amplitude	2255 mm
Operating speed with roll, no more	7 km/h
Weight	250 kg



FORKS

MULTIPURPOSE FORKS

3-teeth 0.8 t

Forks with 3 peaks capable to move the peaks for gripping width change.

Characteristics

Length	1 m
Width	1.1 m

FORKS



MULTIPURPOSE FORKS

2-teeth 0.8 t

Simple and reliable equipment for work with the rolls and bales. Design with a high back to support high load. If necessary, the peaks can be stacked on the top.

Characteristics

Length	1 m
Width	1.1 m



FORKS

PALLET FORKS

Upper element of the frame can be adjusted to the distance between the forks. Forks can be easily moved by changing the gripping width.

Features

Assembled with high-strength "teeth" made in Germany that improve reliability and ensure safe operation

Characteristics

Length	1.1 m
Width	1.2 m
Volume	0.6 m ³



AGRICULTURAL FORKS

Features

Designed for straw, silage and hay grabbing, loading and movement.

Characteristics

Width	1.67 m
Weight	290 kg



AGRICULTURAL FORKS WITH BUCKET

Features

Designed for loading and unloading operations with silage, bulk and viscous cargos.

Characteristics

Width	1.67 m
Weight	275 kg

Bulldozer BLADE



Straight

Straight blade is used for general bulldozer and planning operations and activities. Along the lower edge of the blade there is a replaceable knife fixed.

Characteristics

Length	0.7 m
Width	2 m
Volume	0.5 m ³

Bulldozer BLADE

WITH HYDROTURN OB2-22

Equipped with rotation frame that ensures rotation up to 20° from the straight position. Hydraulic turn with the possibility of mechanical fixation.

Characteristics

Length	0.82 m
Width	2.22 m
Height	0.71 m



BUCKETS

Buckets are designed for bulk cargos of low weight density, and for operations with heavy loads. Bottom of the bucket has additional transverse reinforcements to prevent deflection. Side reinforcements are provided perimeter-wise of the bucket to ensure greater rigidity. The front cutting edge is performed from wear-resistant steel. Upper wall of the double profile is designed for greater strength and stability in torsion. Exact geometry is ensured by laser cutting. 3 vertical reinforcements inside the bucket.

Product line

- bucket – 0.5 m³ reinforced with welded teeth for earthwork operations;
- bucket - 0.5 m³;
- bucket - 0.8 m³ reinforced;
- bucket – 0.8 m³;
- jaw bucket – 0.6 m³.



BUCKETS

BUCKET REINFORCED 0.5 m³ and 0.8 m³

Multipurpose bucket for bulk cargos of low weight density, and for operations with heavy cargos.

Charcateristics

Volume	0.5 m ³	0.8 m ³
Width	1.6 m	2 m
Metal-roll thickness	3 mm	4 mm



BUCKETS

JAW BUCKET

It combines 3 functions in a single working head:

1. Standard bucket
2. Grapple
3. Grader blade

Bucket bottom dumping for unloading allows to increase the height of loading.

Charcateristics

Volume	0.55 m ³
Width	1900 mm



Company is constantly developing new working heads for loader and improves the Frontlift design itself.

JSC "Permglavsnab"
+7 342 2124649
614990, Russia, Perm region,
Perm, Monastyrskaya str., 15
blum@permglavsnab.ru

Krasnokamsky RMZ, LLC
+7 (342) 255-40-98617060, Russia,
Perm region, Krasnokamsk,
Trubnaya str., 4
info@frontlift.ru

Warranty period is 12 months.

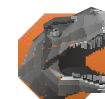


Certificate of compliance

№0040826



Краснокамский **PM3**



FRONTLIFT